

HAVE YOU HAD YOUR BIANNUAL VEHICLE LIFT / CAR STACKER AUDIT?



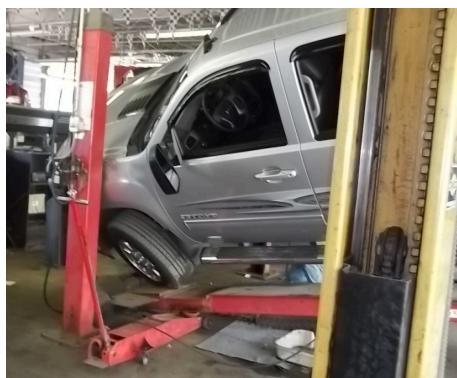
Why should I do a third party safety audit?

- ✓ Our independent audits and checks ensure your vehicle lift or car stacker meets the Australian standard as well as any local statutory standards.
- ✓ Reduces the issues arising with property and facility insurances as well as the potential savings from insurance premiums.
- ✓ Maximise your ROI and extend the life of your vehicle lift / car stacker.
- ✓ Provides peace of mind when OH&S issues arise with the safe operation of your vehicle lift / car stacker.

Protect yourself.

Your vehicle lift / car stacker requires regular maintenance and cleaning. There is a constant risk from weight, wear and multiple moving parts all required to work within a certain sequence to ensure the proper operation of your system. API's safety audit (recommended every 6 months) gives you the tools to operate a safe, clean, informed and maintained product that will extend the life of your investment.

YOUR SAFETY IS RIDING ON IT.



Please note: The API auditing program is voluntary, however vehicle lift / car stacker owners have a duty of care obligation under state OH&S Regulations to ensure that their vehicle lift / car stackers are in a safe condition.

What will the safety inspector check during the audit?

- Examining all accessible structural components, including welds, for any evidence of overloading, misuse or abuse.
- Examining electrical components and wiring.
- Checking the lift controls to ensure accessibility, an unobstructed view of the lift and its safe operation.
- Locating appropriate lift documentation, safety instructions, vehicle lifting information, lift safety labelling and capacity labelling.
- Confirming adequate clearances around the lift.
- Checking all fastening devices for tightness and proper fit.
- Checking the lowering and lifting speed over the full travel of the lift.
- Operating the lift through its full cycle and checking the operation of the positive stop.
- Checking to see if the lift locks engage in the fully extended position.
- All lubrication points for cleanliness, integrity of fitting and presence of lubricant.
- All chains and cables for excessive slack.
- All potential pinch points.

Safety starts with you.

When its time for your biannual lift inspection, trust a qualified Lift Inspector, trust API.



info@autoparkinspection.com.au

autoparkinspection.com.au